

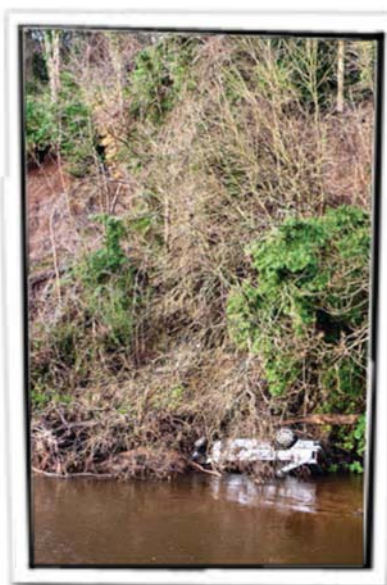
NEWSLETTER



Middle Mills, Lasswade from Elm Row

WHAT HAPPENED TO THE CAR?

In our last Newsletter we referred to the car that was washed down the river during the summer floods. For some time we wondered where it had ended up given that no-one reported seeing it beyond Lasswade. The reason for that it transpires was because it did not travel beyond Lasswade but for many weeks lay covered by other debris also brought down the river by the floods. It can now be seen on the river bank beyond the playing field, as seen in the photograph below.



*Welcome to the
January Newsletter*

As we are preparing this at the very end of 2012 it gives an ideal opportunity to look back at 2012 and forward to 2013. During 2012 we have had our usual clean up days and community garden care days. This year one of our best attended events was the clean up at Polton Mill, and one of our best attended outings was the visit to Dalhousie Castle, more about these later in the Newsletter.

We look forward to 2013 and future social activities to be announced by Rosemary Mackay and Sheena Dryden the social secretaries. We will of course as usual be holding the annual party and the AGM will be upon us in April. See Page 4 for dates.

We continue to meet with the Council to work towards maintaining and improving our local environment.

It is also interesting to note the effect the weather is having on the river bank in much the same spot as the car has come to rest. Several trees have already fallen and as more and more roots become exposed during heavy rain it is clear that more will follow in the future.

NORTH ESK RIVER AND LASSWADE COMMUNITY GARDEN CLEAN UP

A very sincere thank you goes to our small army of volunteers who turned out for the big clean up on September 14th 2012. Given all the debris the floods brought down the river it seemed like a good idea to concentrate our efforts on trying to remove some of this and clean up the river before the next deluge. As can be seen from the photographs we struck lucky with the weather, it was a glorious day and the pagoda with its sun awareness message came into its own!

The workers were rewarded with tea/ coffee/beer/wine and fabulous home baking.



During the course of the clean up these two bikes were retrieved and immediately collected by Susan and Holly. The next time these bikes transport anyone it will be here at the **Children of the Kajiado Centre in Nairobi, Kenya.** More information about the centre can be found via a link on our website.



This rubbish did not get recycled but thanks to the Council did at least get deposited in the correct place!



The Community Garden clean up on the 14th October was not so lucky with the weather but as can be seen in the photos on the right a merry band turned out and did their stuff. This time because of the inclement weather (that's our story) post clean up refreshments were taken in the Paper Mill. Our next work party here will be in the Spring.



GUESS WHO'S COMING TO DINNER



In Nov the Society organised a visit to Dalhousie Castle where we were given an escorted tour. We learnt a great deal about the Ramsay family who had ownership of the castle for more than eight centuries. Their ownership ceased in 1977. Dalhousie has been a castle, a school and since 1972 a hotel. This was an entertaining visit which again was well attended.

MEETINGS WITH THE COUNCIL

In our last Newsletter we advised that according to the minutes of the Bonnyrigg & Lasswade Community Council of 21st June 2012 new traffic lights were to be erected at the Lasswade Bridge end of Polton Road. We are now advised by the Council that this will not now be the case. Since the accident referred to in the last Newsletter the bridge wall has been struck again and there has been an accident on Elm Row and another accident at the entrance to the village from Loanhead which demolished the Bonnyrigg

and Lasswade sign and took out the street lighting. At the time of preparing the Newsletter no solutions nor even suggestions as to how the traffic problem in Lasswade might be addressed have been put forward by the Council. The Society continues to raise its concerns with the Council. The following was the response received from the Council on 2nd October 2012.

“We have carried out several traffic surveys in Lasswade which include speed measurements. Our equipment is not as accurate and reliable as that used by the Police for enforcement purposes, but it is good enough for surveys for our purposes e.g. to compare different sites, or to see if schemes have had any effects. Also our surveys have been in locations where there was concern about inappropriate speed e.g. on approach to the bridge or the bend at the west part of the High Street, rather than where the highest speeds are likely to be.

On the A768 we last surveyed speeds between West Mill Road and Polton Road. The equipment operated continuously from 11:45 on 31/07/12 until 22:00 on 06/08/12. On average there were 19,156 vehicles counted per week-day, with 194 per day (just over 1%) exceeding 30mph. Almost all of these were travelling east-



bound ie away from the bridge, and none were recorded as travelling as fast as the normal threshold for the Police to issue a fixed penalty notice for speeding.

Further west in the High Street, between the entrance to the 30mph limit and the bend, we had a similar survey in March 2011. This found that on average 4,078 vehicles per day (23%) were recorded as exceeding the limit with some recorded as travelling as fast as the normal threshold for the Police to issue a fixed penalty notice for speeding. Again most of these were travelling east-bound.

Speeding enforcement is normally an issue for the Police to deal with. Elsewhere in Midlothian we are soon expecting mobile Safety Camera units to help with enforcing some speed limits and deterring some bad driving. The experience from these may help show whether there is scope for more to be done to improve safety and the environment on our roads, with more use of speed cameras.”

We are still discussing the signage at the village entrance and various other small projects such as the maintenance of the bus shelter opposite the Laird and Dog and the possibility of providing a hand rail beside the steps from the Laird and Dog car park to the old Church yard.

We continue to meet on a regular basis with the Council and will raise issues on behalf of members if concerns or queries are communicated to us. See Page 4 for contact details.



GOOD NEWS STORY

The small and spectacular reserve set deep in the River North Esk valley, Springfield Mill has retained its Green Flag Award, a sign to visitors that the park is well-maintained and well-managed, with excellent facilities. Councillor Bob Constable, cabinet member with responsibility for parks, congratulated the Ranger team and everyone involved in the project. He said; "It is a real achievement to retain its Green Flag status, especially as Springfield Mill has developed so quickly. It is a real all round space for everyone to enjoy." After the paper mill closed in the late 1960s, the site became more and more derelict. Working closely with Springfield Mill Action Group (SMAG), Midlothian Council completed the restoration just two years ago. Work included creating seasonal ponds, a wildflower meadow and new wooded areas for wildlife. New paths were also built to allow public access. A huge thank you goes to everyone who worked alongside the Council's Ranger Service and SMAG to help retain the Green Flag Award. These include local residents, conservation volunteers and partners include Lothian's Conservation Volunteers, The Green Team & Green Shoots, The Edinburgh Dirty Weekenders, the Criminal Justice Team and the Future Jobs Team. The applications for the Green Flag Awards are judged against eight criteria: a welcoming place;

healthy safe and secure; clean and well maintained; sustainability; conservation and heritage; community involvement; marketing; and management.

The Green Flag Award Scheme is managed by a consortium, including Keep Britain Tidy.

This information has been provided for us by Jo Cooke, Warden, Midlothian Council who can be contacted at

Jo.Cooke@midlothian.gov.uk

Planning Matters

New Concern

Although development plans have not yet been submitted to Midlothian council, we have become aware of proposals to build a high density housing development of 40 units next to the Polton Road Industrial Estate. In a Green Belt Conservation Area of Great Landscape Value this is a cause for concern, as is the likely increased traffic on Polton Road generated by the proposed 60 car parking spaces.

Update from the Autumn 2012 Newsletter

Very little news to report. No further development applications have been submitted to Midlothian Council for Kevock Vale Caravan Park or Byways, 11 Church Road, Lasswade. The Mavisbank Trust website <http://www.mavisbank.org.uk/> still urgently seeks funds of £11.4 million to save Mavisbank house and an update regarding the MC Local Housing Strategy 2012-2017 consultation is in the pipeline and should be available on the MC website in January or February 2013.

Weekly planning applications submitted to Midlothian Council

Calendar

Friday 8th March 2013

Annual Cheese and Wine

Sunday 10th March 2013

Community Garden Clean Up

Monday 8th April 2013

Annual General Meeting

Plus a talk by Neil Stewart on Scottish Landscape Artist William McTaggart who lived in Lasswade

Sunday 12th May 2013

River Clean Up

can be viewed on the MC website:

<https://planning-applications.midlothian.gov.uk/OnlinePlanning/search.do?action=weeklyList>

Watch This Space

The new Midlothian Local Development Plan which is currently being prepared is expected to be available for public consultation in March or April 2013.

Contributors

ARTICLES

Jo Cooke, Sheena Dryden
Sheila Murray, Jan Jerome

PHOTOGRAPHS

Sheena Dryden
Jan Jerome

CONTACT US

Via your local rep.
Via the website
www.lasswadecivic.com
Phone 07990818228